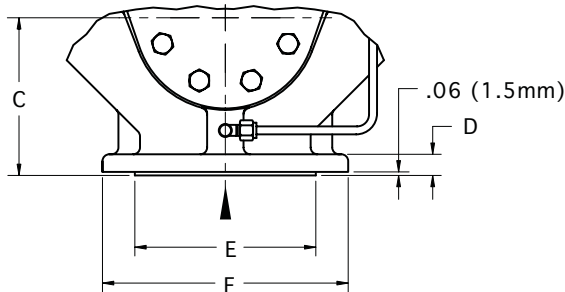
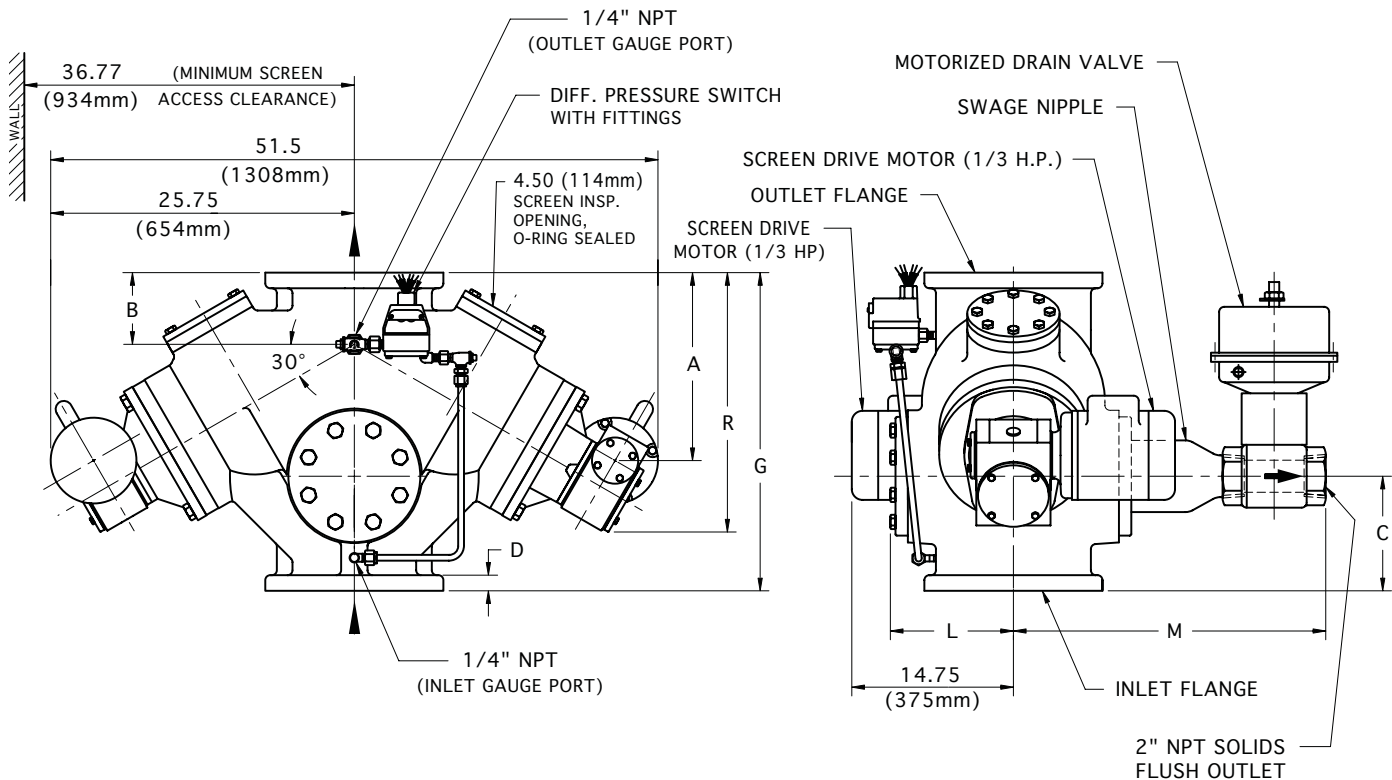
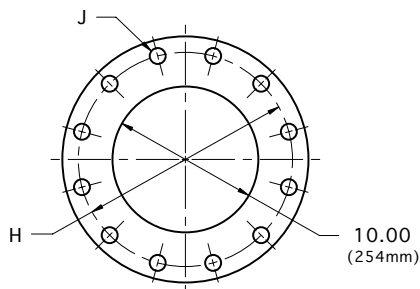


10" AUTOMATIC STRAINER

In-Line Flow Type DA



FOR ANSI FLANGE CLASS 250, 150, 300 & DIN



TOP & BOTTOM FLANGES

FLANGE SIZE		A	B	C	D	E	F	G	H	J (HOLES) No.	J (HOLES) DIA.	L	M	R	APPROX. WEIGHT
ANSI class 125 CAST IRON	INCH	15.66	5.69	9.50	1.19	NA	16.00	27.50	14.25	12	1.00	10.39	23.06	20.48	1125 Lb.
	MM	398	144	241	30	NA	406	699	362	12	25	264	586	520	511 Kg.
ANSI class 250 CAST IRON	INCH	16.35	6.38	10.19	1.88	14.06	17.50	28.88	15.25	16	1.12	10.84	23.56	21.17	1200 Lb.
	MM	415	162	259	48	357	445	733	387	16	29	275	598	538	545 Kg.
ANSI class 150 CAST STEEL	INCH	15.66	5.69	9.50	1.19	12.75	16.00	27.50	14.25	12	1.00	10.39	23.06	20.48	1175 Lb.
	MM	398	144	241	30	324	406	699	362	12	25	264	586	520	534 Kg.
ANSI class 300 CAST STEEL	INCH	16.35	6.38	10.19	1.88	12.75	17.50	28.88	15.25	16	1.12	10.84	23.69	21.17	1250 Lb.
	MM	415	162	259	48	324	445	733	387	16	29	275	602	538	568 Kg.
250 ND 10 DIN 2501	FLANGE DRILLING (NUMBER AND SIZE OF HOLES AND BOLT CIRCLE) IS IN ACCORDANCE WITH D.I.N. STANDARDS. ALL OTHER APPLICABLE DIMENSIONS ARE IN ACCORDANCE WITH ANSI STANDARDS ABOVE.														
250 ND 16 DIN 2501															

THESE DIMENSIONS ARE FOR REFERENCE ONLY. FOR INSTALLATION PURPOSES, REQUEST CERTIFIED DRAWINGS.