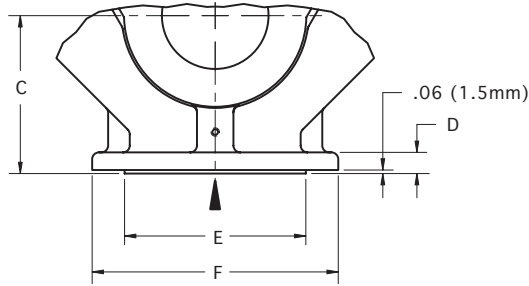
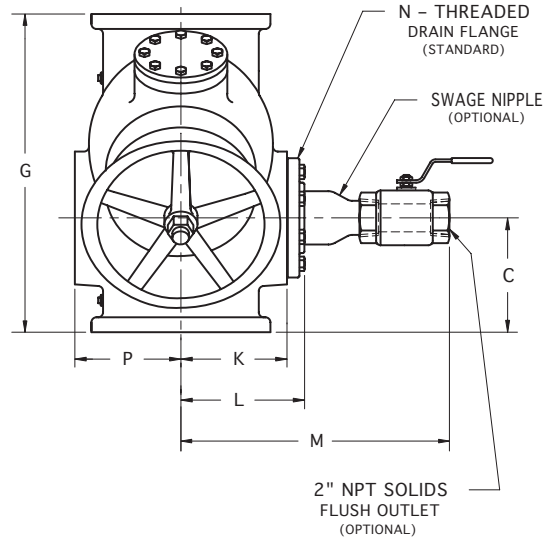
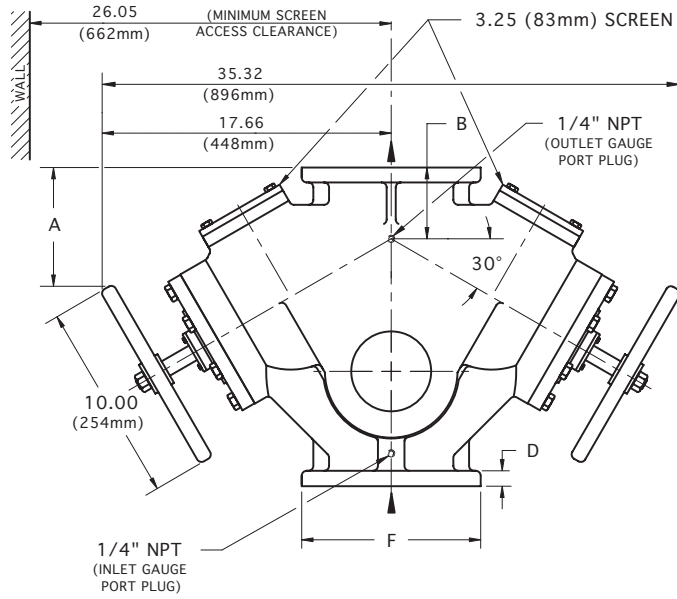
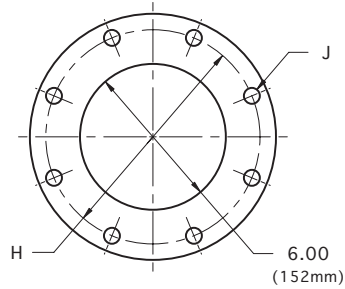


6" MANUAL STRAINER

In-Line Flow Type DH



FOR ANSI FLANGE CLASS 250, 150, 300 & DIN



TOP & BOTTOM FLANGES

FLANGE SIZE		A	B	C	D	E	F	G	H	J (HOLES) No.	J (HOLES) DIA.	K	L	M	P	'N' DRAIN FLANGE SIZE	APPROX. WEIGHT	
ANSI class 125 CAST IRON	INCH	8.95	4.88	7.12	1.00	NA	11.00	20.00	9.50	8	.88	6.44	7.64	19.50	6.12	3" NPT	400 Lb	
	MM	227	124	181	25	NA	279	508	241	8	22	164	194	495	155		182 Kg	
ANSI class 250 CAST IRON	INCH	9.39	5.31	7.56	1.44	9.69	12.50	20.88	10.62	12	.88	6.56	8.22	19.06	6.12	2-1/2" NPT	425 Lb	
	MM	238	135	192	37	246	318	530	270	12	22	167	209	484	155		193 Kg	
ANSI class 150 CAST STEEL	INCH	8.95	4.88	7.12	1.00	8.50	11.00	20.00	9.50	8	.88	6.56	7.95	19.62	6.12	3" NPT	430 Lb	
	MM	227	124	181	25	216	279	508	241	8	22	167	202	498	155		195 Kg	
ANSI class 300 CAST STEEL	INCH	9.39	5.31	7.56	1.44	8.50	12.50	20.88	10.62	12	.88	6.56	8.09	19.00	6.00	2-1/2" NPT	455 Lb	
	MM	238	135	192	37	216	318	530	270	12	22	167	205	483	152		207 Kg	
150 ND 10 DIN 2501	FLANGE DRILLING (NUMBER AND SIZE OF HOLES AND BOLT CIRCLE) IS IN ACCORDANCE WITH D.I.N. STANDARDS.																	
150 ND 16 DIN 2501	ALL OTHER APPLICABLE DIMENSIONS ARE IN ACCORDANCE WITH ANSI STANDARDS ABOVE.																	

THESE DIMENSIONS ARE FOR REFERENCE ONLY. FOR INSTALLATION PURPOSES, REQUEST CERTIFIED DRAWINGS.