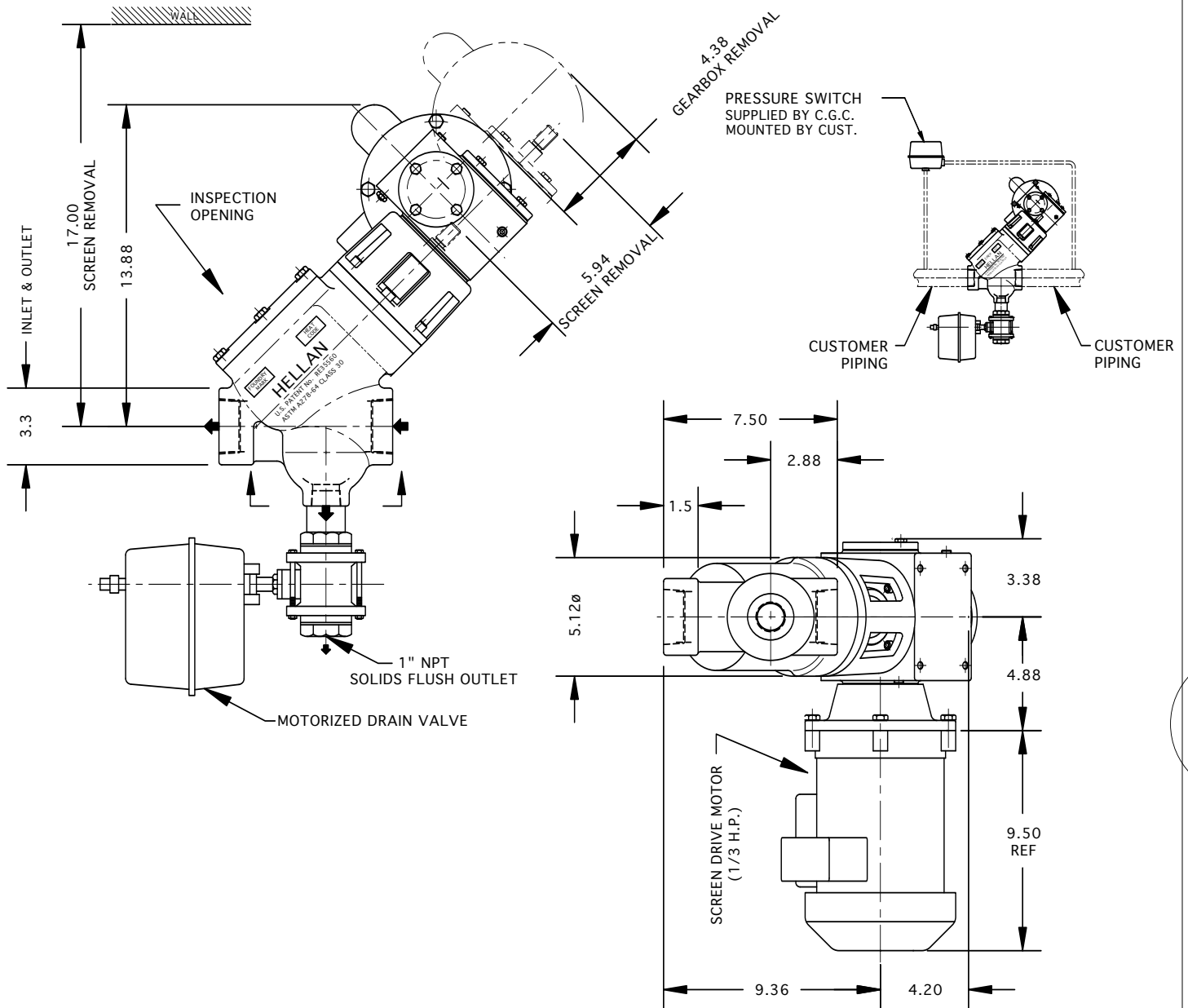


# 1-1/2" & 2" AUTOMATIC STRAINER

## In-Line Flow Type TSA



**VIEW A-A**

STRAINER SIZE	FLANGE SIZE	MATERIAL	APPROX. WEIGHT
1-1/2"	1-1/2 NPT Cast Iron & Ductile Iron	ASTM A278-64 CLASS 30	101 Lb 46 Kg
	1-1/2 NPT Cast Steel	ASTM A216 WCB	104 Lb 47 Kg
2"	2" NPT Cast Iron & Ductile Iron	ASTM A278-64 CLASS 30	101 Lb 46 Kg
	2" NPT Cast Steel	ASTM A216 WCB	104 Lb 47 Kg

ORIENTATION - DRAIN MUST BE DOWN.  
THESE DIMENSIONS ARE FOR REFERENCE ONLY. FOR INSTALLATION PURPOSES, REQUEST CERTIFIED DRAWINGS.