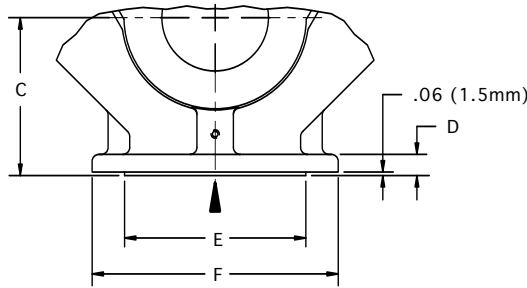
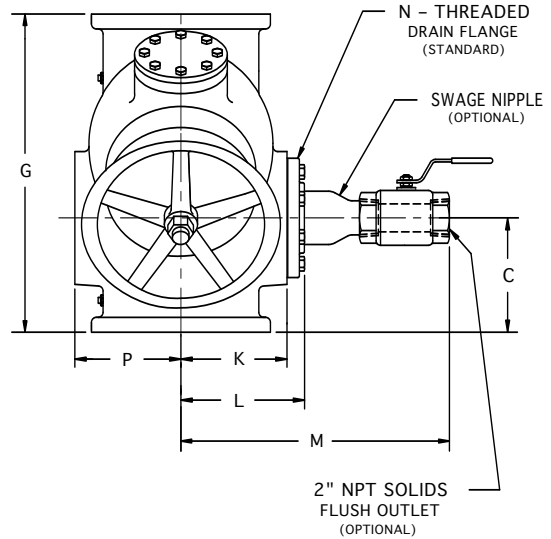
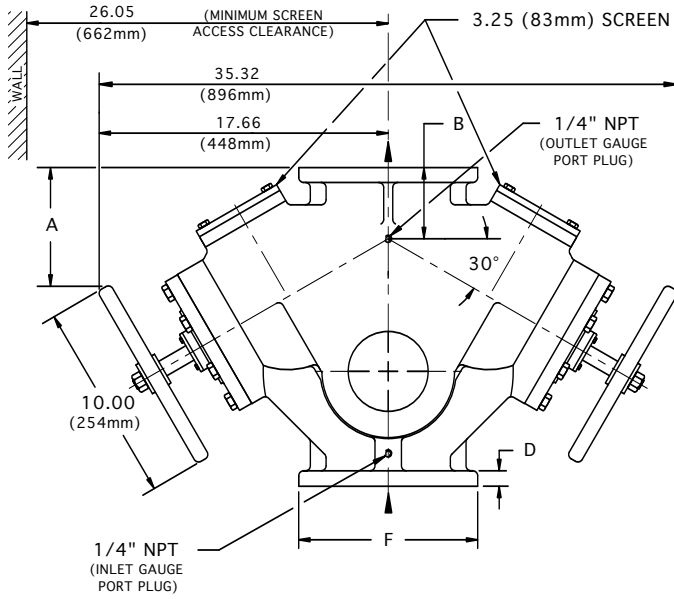
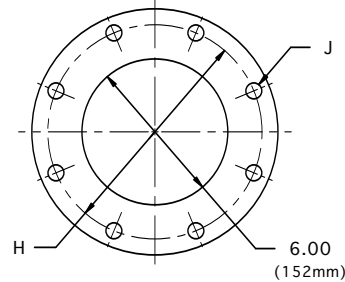


6" MANUAL STRAINER

In-Line Flow Type DH



FOR ANSI FLANGE CLASS 250, 150, 300 & DIN



TOP & BOTTOM FLANGES

FLANGE SIZE		A	B	C	D	E	F	G	H	J (HOLES) No. DIA.	K	L	M	P	NO DRAIN FLANGE SIZE	APPROX. WEIGHT
ANSI class 125 Cast Iron & Ductile Iron	INCH	8.95	4.88	7.12	1.00	NA	11.00	20.00	9.50	8 .88	6.44	7.64	19.50	6.12	3" NPT	400 Lb
	MM	227	124	181	25	NA	279	508	241	8 22	164	194	495	155		182 Kg
ANSI class 250 Cast Iron & Ductile Iron	INCH	9.39	5.31	7.56	1.44	9.69	12.50	20.88	10.62	12 .88	6.56	8.22	19.06	6.12	2-1/2" NPT	425 Lb
	MM	238	135	192	37	246	318	530	270	12 22	167	209	484	155		193 Kg
ANSI class 150 Cast Steel	INCH	8.95	4.88	7.12	1.00	8.50	11.00	20.00	9.50	8 .88	6.56	7.95	19.62	6.12	3" NPT	430 Lb
	MM	227	124	181	25	216	279	508	241	8 22	167	202	498	155		195 Kg
ANSI class 300 Cast Steel	INCH	9.39	5.31	7.56	1.44	8.50	12.50	20.88	10.62	12 .88	6.56	8.09	19.00	6.00	2-1/2" NPT	455 Lb
	MM	238	135	192	37	216	318	530	270	12 22	167	205	483	152		207 Kg
150 ND 10 DIN 2501	FLANGE DRILLING (NUMBER AND SIZE OF HOLES AND BOLT CIRCLE) IS IN ACCORDANCE WITH D.I.N. STANDARDS. ALL OTHER APPLICABLE DIMENSIONS ARE IN ACCORDANCE WITH ANSI STANDARDS ABOVE.															
150 ND 16 DIN 2501																

THESE DIMENSIONS ARE FOR REFERENCE ONLY. FOR INSTALLATION PURPOSES, REQUEST CERTIFIED DRAWINGS.