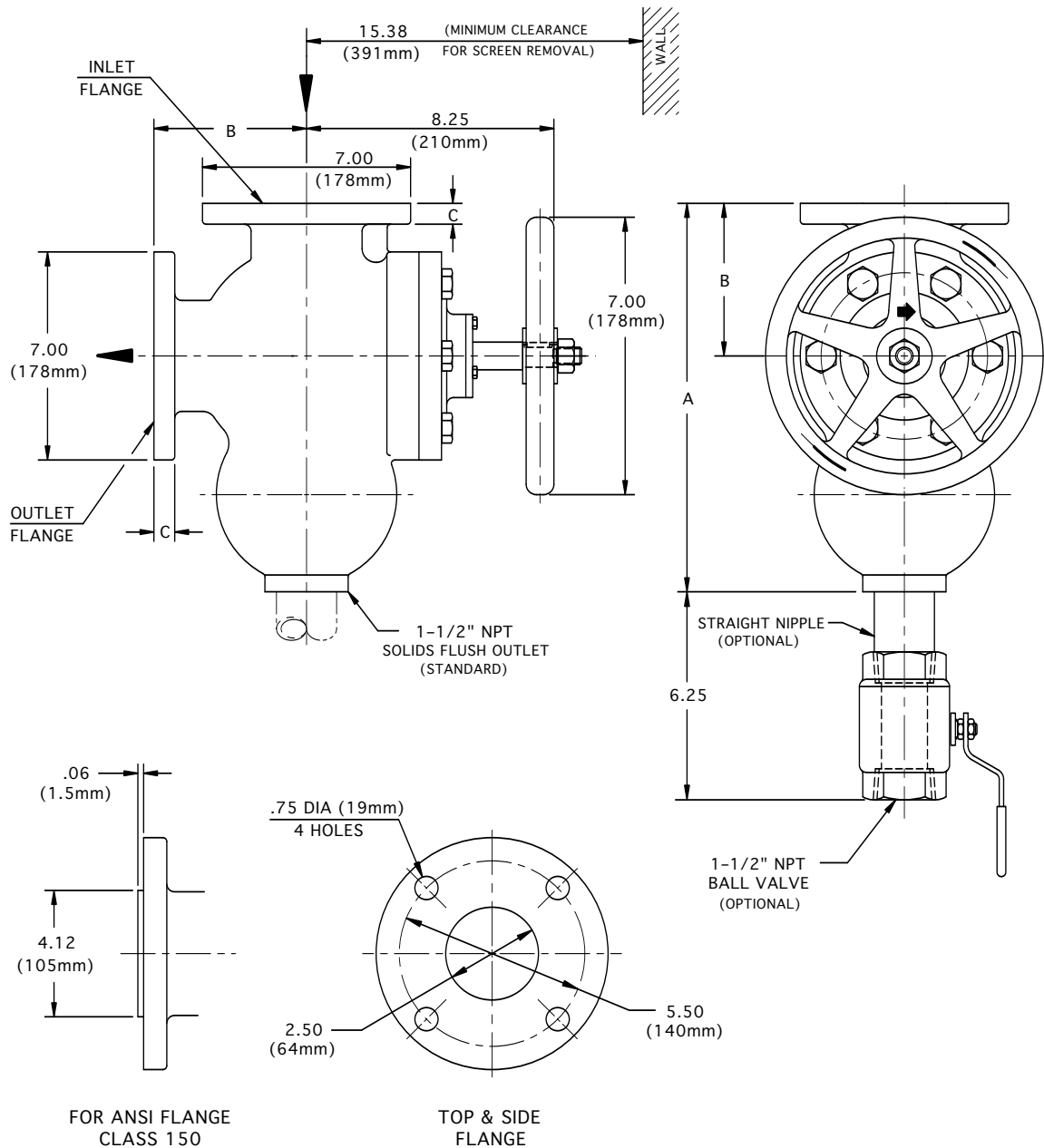


# 2-1/2" MANUAL STRAINER

## Angled Flow Type AH



FLANGE SIZE		A	B	C	APPROX. WEIGHT
ANSI class 125 Cast Iron & Ductile Iron	INCH	12.00	5.00	.69	70 Lb
	MM	305	127	18	32 Kg
ANSI class 150 Cast Steel	INCH	12.19	5.19	.88	74 Lb
	MM	310	130	22	34 Kg
65 ND 10 DIN 2501	FLANGE DRILLING (NUMBER AND SIZE OF HOLES AND BOLT CIRCLE) IS IN ACCORDANCE WITH D.I.N. STANDARDS. ALL OTHER APPLICABLE DIMENSIONS ARE IN ACCORDANCE WITH ANSI STANDARDS ABOVE.				

THESE DIMENSIONS ARE FOR REFERENCE ONLY. FOR INSTALLATION PURPOSES, REQUEST CERTIFIED DRAWINGS.