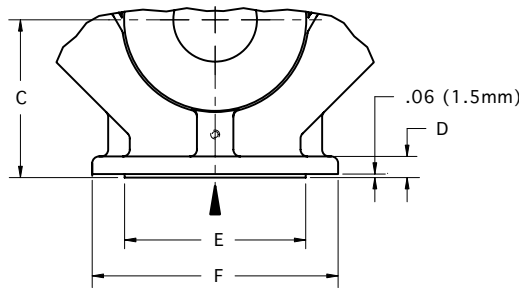
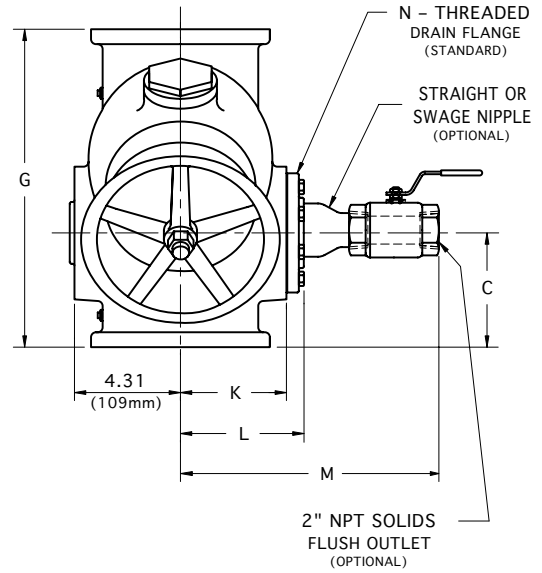
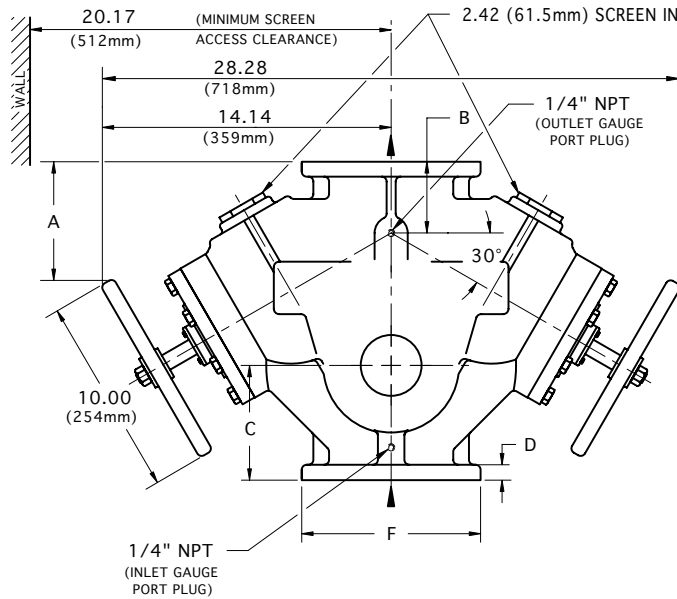
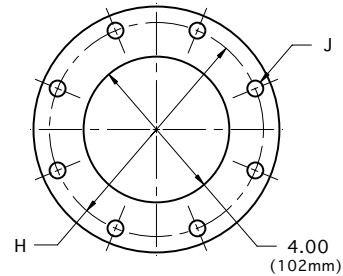


4" MANUAL STRAINER

In-Line Flow Type DH



FOR ANSI FLANGE CLASS
250, 150, 300 & DIN



TOP & BOTTOM FLANGES

FLANGE SIZE		A	B	C	D	E	F	G	H	J (HOLES)		K	L	M	'N' DRAIN FLANGE SIZE	APPROX. WEIGHT
										No.	DIA.					
ANSI class 125 Cast Iron & Ductile Iron	INCH	6.22	4.19	6.00	.94	NA	9.00	16.00	7.50	8	.75	4.88	6.02	16.94	2-1/2" NPT	170 Lb 77 Kg
	MM	158	106	152	24	NA	229	406	191	8	19	124	153	430		
ANSI class 250 Cast Iron & Ductile Iron	INCH	6.53	4.50	6.31	1.25	6.94	10.00	16.62	7.88	8	.88	5.12	6.45	14.56	2" NPT	190 Lb 86 Kg
	MM	166	114	160	32	176	254	422	200	8	22	130	164	370		
ANSI class 150 Cast Steel	INCH	6.22	4.19	6.00	.94	6.19	9.00	16.00	7.50	8	.75	5.12	6.33	14.31	2" NPT	180 Lb 82 Kg
	MM	158	106	152	24	157	229	406	191	8	19	130	161	363		
ANSI class 300 Cast Steel	INCH	6.53	4.50	6.31	1.25	6.94	10.00	16.62	7.88	8	.88	5.12	6.45	14.62	2" NPT	200 Lb 90 Kg
	MM	166	114	160	32	176	254	422	200	8	22	130	164	371		
100 ND 10 DIN 2501	FLANGE DRILLING (NUMBER AND SIZE OF HOLES AND BOLT CIRCLE) IS IN ACCORDANCE WITH D.I.N. STANDARDS.															
100 ND 16 DIN 2501	ALL OTHER APPLICABLE DIMENSIONS ARE IN ACCORDANCE WITH ANSI STANDARDS ABOVE.															

THESE DIMENSIONS ARE FOR REFERENCE ONLY. FOR INSTALLATION PURPOSES, REQUEST CERTIFIED DRAWINGS.