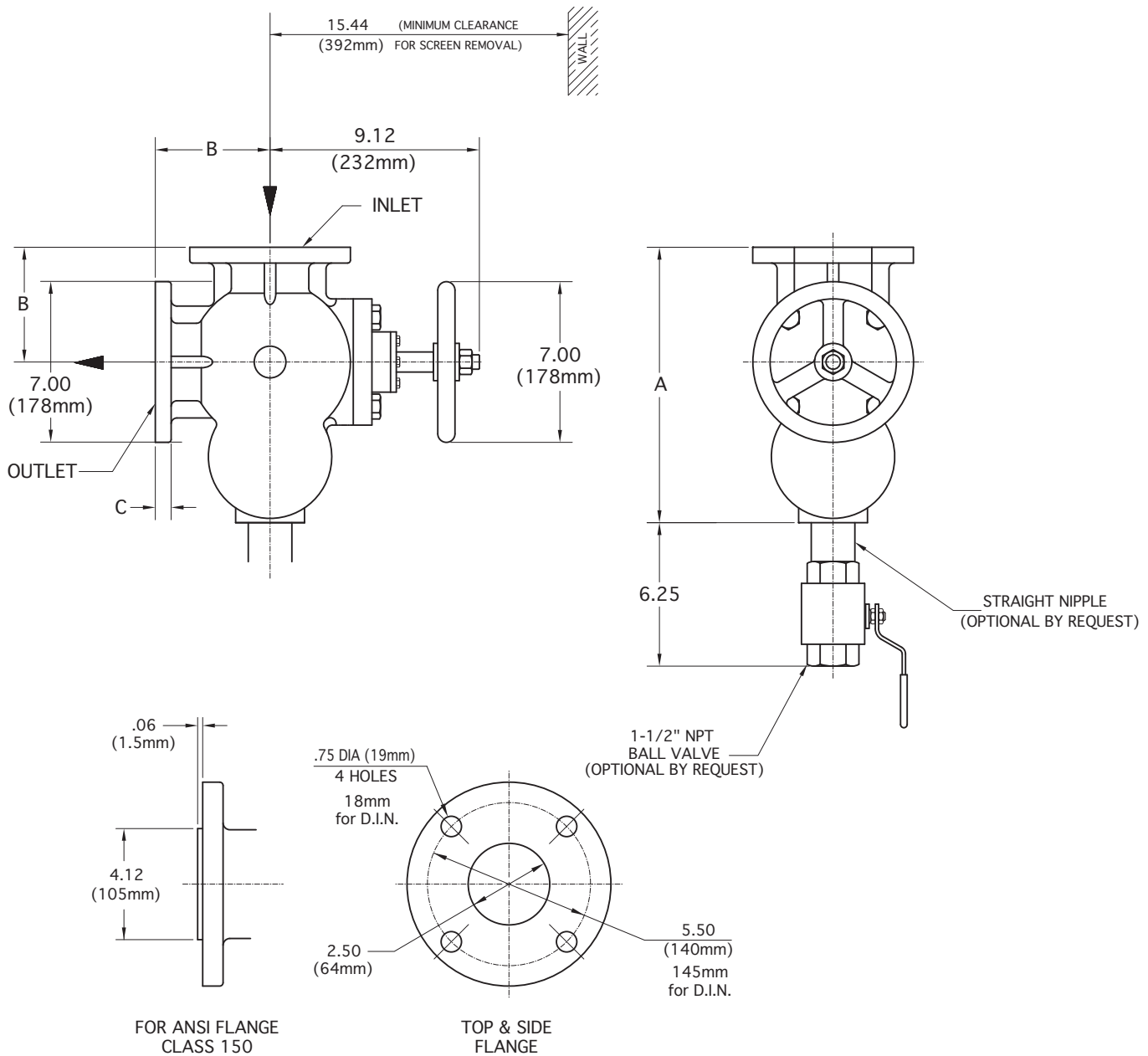


# 2-1/2" MANUAL STRAINER

## Angled Flow Type AH



26

FLANGE SIZE		A	B	C	APPROX. WEIGHT
ANSI class 125 CAST IRON	INCH	12.00	5.00	.69	70 lb
	MM	305	127	18	32 kg
ANSI class 150 CAST STEEL & STAINLESS STEEL	INCH	12.19	5.19	.88	74 lb
	MM	310	132	22	34 kg
65 DN 10 DIN 2501	FLANGE DRILLING (NUMBER AND SIZE OF HOLES AND BOLT CIRCLE) IS IN ACCORDANCE WITH D.I.N. STANDARDS. ALL OTHER APPLICABLE DIMENSIONS ARE IN ACCORDANCE WITH ANSI STANDARDS ABOVE.				

ORIENTATION - DRAIN MUST BE DOWN

THESE DIMENSIONS ARE FOR REFERENCE ONLY. FOR INSTALLATION PURPOSES, REQUEST CERTIFIED DRAWINGS.